

ITEM 44. PARKING – TIMED PARKING – MENTMORE AVENUE ROSEBERY

TRIM RECORD NO: 2017/469856

RECOMMENDATION

It is recommended that the Committee endorse the allocation of parking on the eastern side of Mentmore Avenue, Rosebery between the points 10 metres and 97 metres (twelve car spaces) south of Epsom Road, as “2P 8am-8pm”.

VOTING MEMBERS FOR THIS ITEM

<i>Voting Members</i>	<i>Support</i>	<i>Object</i>
City of Sydney		
Roads and Maritime Services		
NSW Police – Redfern LAC		
Representative for the Member for Heffron		

DECISION

BACKGROUND

The Development Consent for 2-6 Mentmore Avenue and 2-2A Rothschild Avenue, Rosebery (D/2015/196) requires the Applicant to submit a signage plan for kerbside parking arrangements for the site’s frontage along Mentmore Avenue, to be referred to the Local Pedestrian, Cycling and Traffic Calming Committee.

COMMENTS

The City has approved the redevelopment of 2-6 Mentmore Avenue and 2-2A Rothschild Avenue, Rosebery.

The redevelopment of the site, and a Condition of Development Consent, also includes the removal of a number of redundant driveways in Mentmore Avenue. This would result in an increase of three parking spaces for residents and visitors to the area.

The kerb space on the eastern side of Mentmore Avenue, adjacent to the site, is currently unrestricted.

It is proposed to install parking restrictions to reflect the change in adjacent land use. As such, it is proposed to install “2P 8am-8pm” along the frontage of the redevelopment site. This change will comply with City’s Neighbourhood Parking Policy which recommends a two-hour parking limit as it better balances the aim of deterring commuter parking with the needs of households for visitors, carers and tradespeople.

CONSULTATION

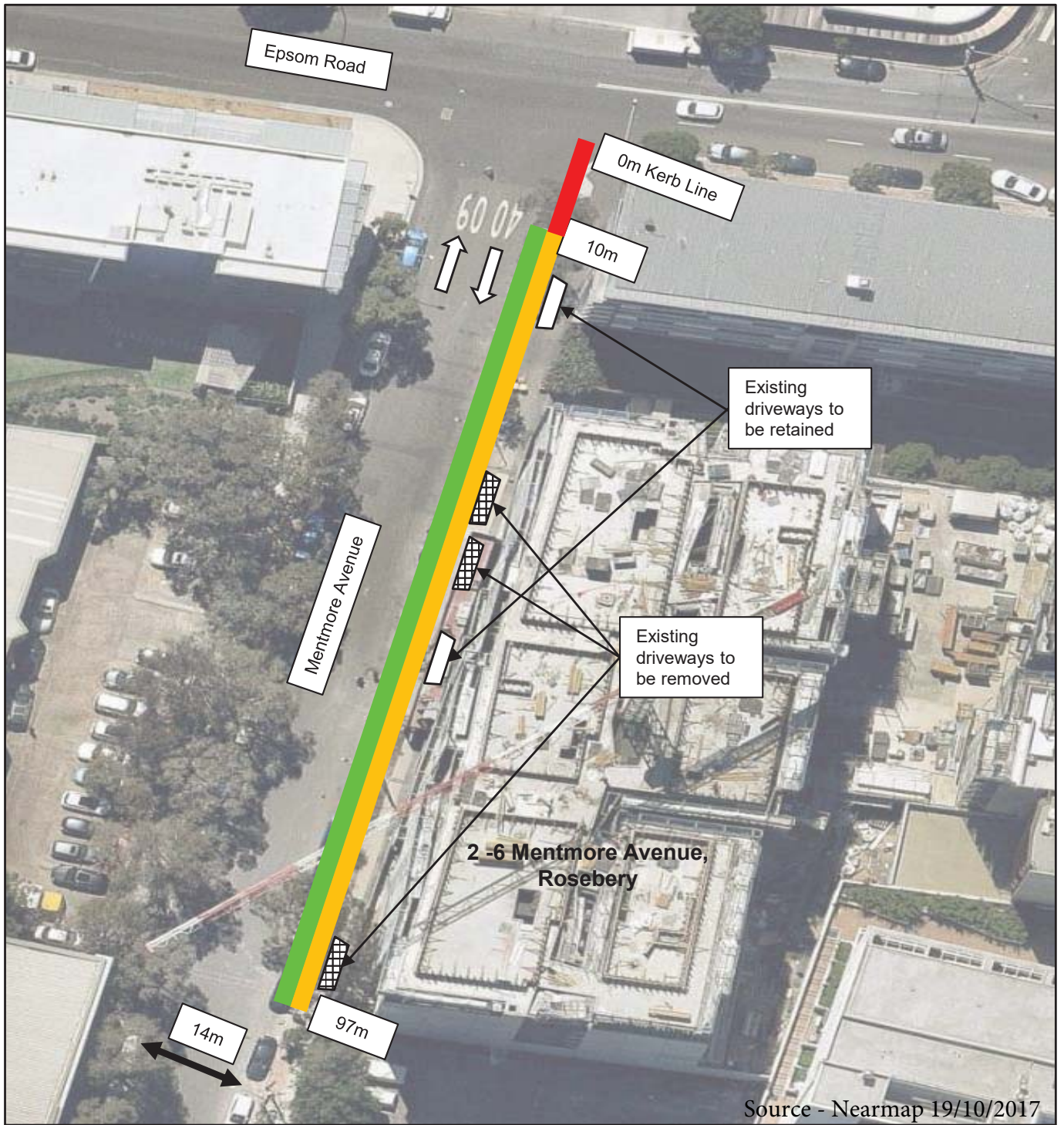
The Applicant must notify adjacent properties at least seven days prior to the implementation of the changes.

FINANCIAL

All costs associated with the proposal will be borne by the Applicant.

Parking – Timed Parking – Mentmore Avenue Rosebery

Manbir Singh, Senior Traffic Engineer



Legend

- Unrestricted (Existing)
- "2P 8am-8pm" (Proposed)
- "No Stopping" (Existing)

PARKING PROPOSAL

MENTMORE AVENUE, ROSEBERY



